

Important safety information  
for patients treated with

# RANIVISIO<sup>▼</sup>

(ranibizumab)

in wet (neovascular) age related macular  
degeneration (AMD)

▼ This medicine is subject to additional monitoring. This will allow quick identification of new safety information. You can help by reporting any side effects you may get.

**Suspected adverse reactions should be reported to the MHRA via Yellow Card Scheme at [www.mhra.gov.uk/yellowcard](http://www.mhra.gov.uk/yellowcard).**

## Your guide to therapy with RANIVISIO (ranibizumab) in the treatment of neovascular (wet) age-related macular degeneration (AMD).



Please use the QR-Code or web address to access the audio format or to download this guide:  
<https://medinfo.midas-pharma.com/xi>.

Please refer additionally to the Patient Information Leaflet to read what RANIVISIO (ranibizumab) is and what it is used for.

If you find the Patient Information Leaflet difficult to read, it can be listened to or downloaded: <https://medinfo.midas-pharma.com/xi>.

### Summary of important information

Contact your doctor as soon as possible if you experience any of the following symptoms after treatment with RANIVISIO (ranibizumab):

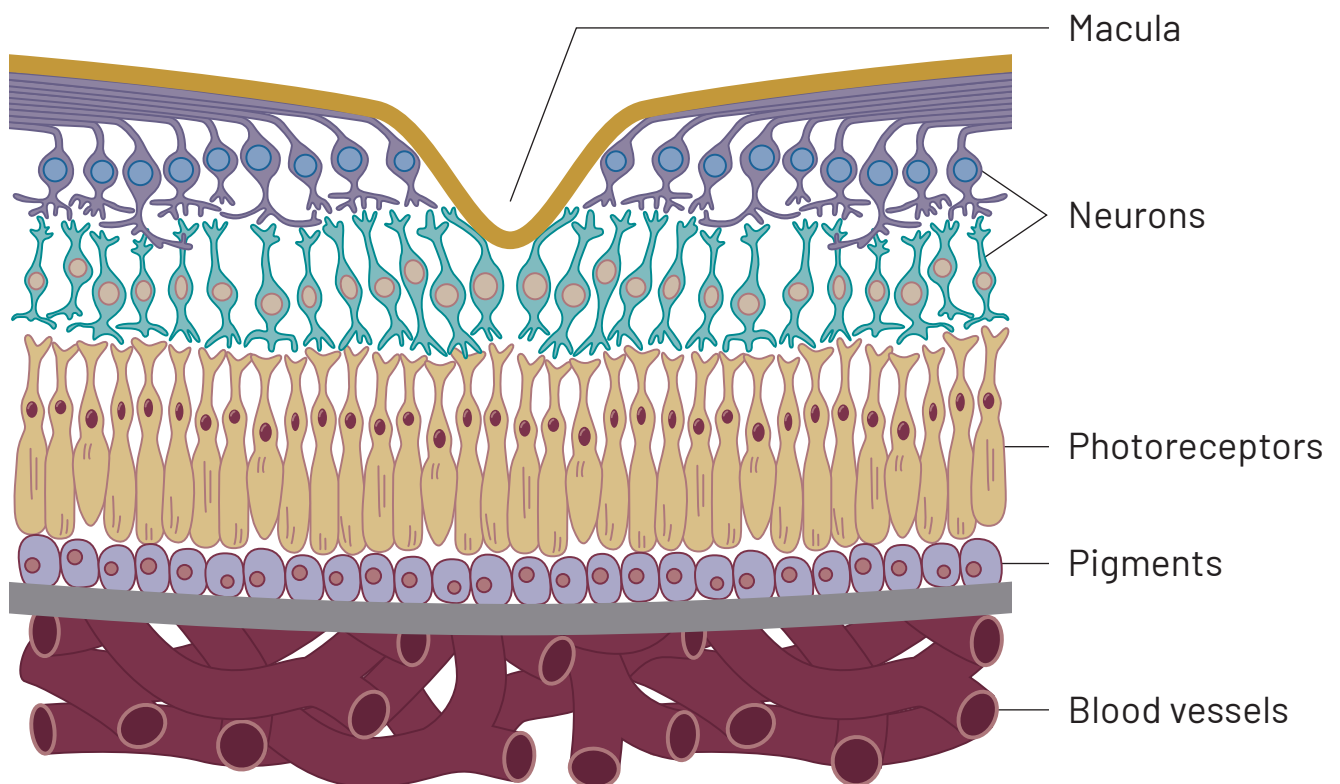
- Pain
- Light sensitivity/tearing
- Swollen lids or other swelling
- Light flashes
- Seeing flies, black spots or coloured halos
- Drying of the surface of your eye
- Increasing redness
- Blurred, distorted or sudden loss of vision

## What is RANIVISIO?

In diseases such as AMD, abnormal blood vessels grow in the eye. These can leak and cause vision loss.

RANIVISIO contains ranibizumab as the active medicinal ingredient. Ranibizumab specifically recognises and blocks the action of new blood vessel growth in the eye, and in turn can help to stop leakage and vision loss.

### Healthy retina

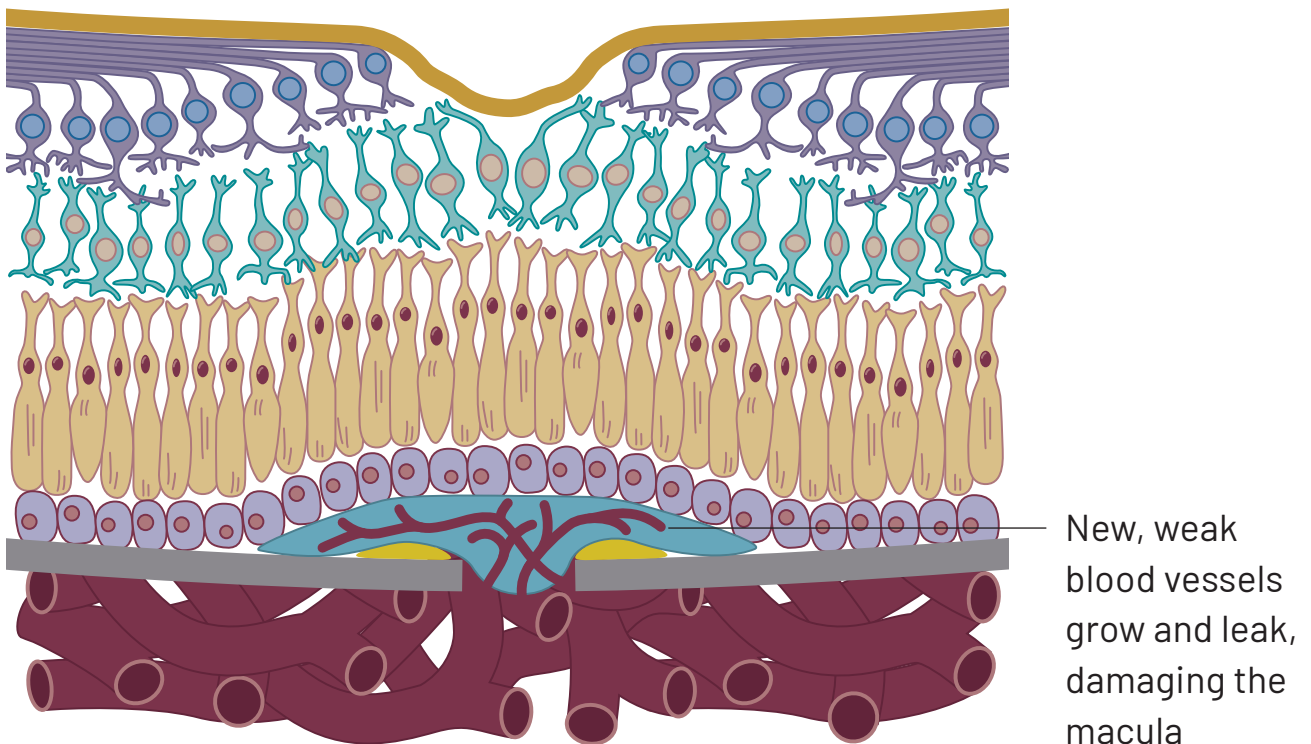


## Why have I been prescribed RANIVISIO?

You have been diagnosed with wet AMD.

- Wet AMD is a condition that affects the macula, a part of the retina at the back of the eye.
- The macula is the area that lets you see sharply in the centre of your vision.
- With age, and with the build-up of waste products, changes can occur in the retina.
- This can result in new, weak blood vessels growing and leaking under the macula, damaging your central vision.

### nAMD affected retina



## How is RANIVISIO treatment given?

RANIVISIO is given by your ophthalmologist (eye doctor) as an injection into the eye.

It is normal to worry about such injections, but usually the injection is virtually painless.

## What will happen at my treatment appointment?

On the day of your treatment, care will be taken to make sure you are relaxed and comfortable.

Before receiving RANIVISIO, it is important to tell your doctor if:

- You have had a stroke or experienced transient signs of stroke (weakness or paralysis of limbs or face, difficulty speaking or understanding).
- You are taking or have recently taken any other medicines, including medicines obtained without prescription.
- You have an eye infection.
- You have any pain or redness in your eye.
- You think you may be allergic to RANIVISIO, to other medicines with ranibizumab or to Betadine® (iodine).

Keeping your doctor informed will help them to decide whether RANIVISIO is the most appropriate treatment for you.

Prior to the treatment a doctor or nurse will:

- Cover your face and the area around the eye with a special drape.
- Clean your eye and the skin around it.
- Hold your eye open so you do not blink.
- Numb your eye with an anesthetic to prevent pain.

The doctor will then give the injection into the white part of your eye. You may feel a little pressure with the injection.

## What will happen after I receive my RANIVISIO injection?

Your doctor will perform eye tests, such as measuring the pressure in your eye, to make sure the treatment went well.

The white area of the eye, where the injection is given, will likely be red.

- This redness is normal and it will go away in a few days.

You may see a few spots or 'floaters' in your vision.

- These spots are normal and should go away in a few days.

**Contact your doctor if either of these symptoms do not go away or get worse.**

Your pupils will be dilated for the injection, and this can make it difficult for you to see for a few hours after the treatment.

- You should not drive until your vision has returned to normal.

**It is important to monitor any changes in the condition of your eye and your overall well-being in the week following your injection.**

Rarely, injections in the eye can cause infection.

## What to do if I have side effects?

Contact your doctor as soon as possible if you have any of the following signs and symptoms in your eye:

- Pain
- Light sensitivity/tearing
- Swollen lids or other swelling
- Increasing redness
- Blurred, distorted or sudden loss of vision
- Light flashes
- Seeing flies, black spots or coloured halos
- Drying of the surface of your eye.

If you notice any side effects, talk to your doctor, pharmacist or nurse. This includes any possible side effects not listed in the package leaflet.

**You can also report side effects directly via the Yellow Card Scheme at [www.mhra.gov.uk/yellowcard](http://www.mhra.gov.uk/yellowcard)**

Please ensure that you provide the brand name (or product licence number and manufacturer), and the specific batch-number.

By reporting side effects you can help provide more information on the safety of this medicine.

## How long will I need to continue RANIVISIO treatment?

Every patient is different. It is likely that you will need additional RANIVISIO or other ranibizumab injections, but this will depend on how you respond to treatment and how your vision changes.

If you are considering stopping treatment with RANIVISIO, ask your doctor for advice first.

For any further questions on the use of this product, please ask your doctor.

Follow all your doctor's advice carefully. They may differ from the general information in this guide.

**Your doctor will decide how often they wish to see you to monitor your condition and determine if you need additional injections.**

---

**Always go to every appointment that your doctor arranges for you.**

---

**If you miss an appointment for RANIVISIO (ranibizumab) treatment, contact your doctor as soon as possible.**

**Keep this guide; you may need to read it again.**

---

**If you have any further questions, ask your doctor or pharmacist.**

---

**If you experience any signs or symptoms that you consider to be associated with the use of RANIVISIO (ranibizumab), but are not listed in this guide, please tell your doctor.**

---

**This guide is provided for your education and complements the Patient Information Leaflet.**